

# Total health starts with a **smile**

## Cultivate your whole-body wellness with oral care.

The **Kaiser Permanente Smile Kids ML Dental Copay EPO** plan offers dental benefits to support improved oral health for whole-body wellness. It covers a comprehensive range of preventive, diagnostic, and restorative services - with no waiting periods - and a robust selection of providers. Preventive care comes at a low out-of-pocket cost. The EPO plan offers your children the freedom to see any licensed dentist within our network while paying predictable copays.

Benefit summary	
Network access	In-network only
Annual dental deductible (Per member / 3x per family)	None
Annual maximum benefit (Per member)	None
Deductible waived	All services
Waiting periods	None

Plan structure	
Service	Member copay*
<b>Diagnostic and preventive</b> Covers oral exams, x-rays, fluoride/sealants and more	\$0 - \$562
<b>Basic restorative</b> Covers fillings, root canals, tooth extractions and more	\$40 - \$800
<b>Major restorative</b> Covers crowns, bridges, dentures, major extractions and more	\$0 - \$4,455

\* Copay dollar amounts vary by specific services.

OrthoPlus rider**	
Network access	In-network only
OrthoPlus options	Child only available
OrthoPlus rider type	Copay
Orthodontic lifetime max (not applicable to copay plans)	None

\*\* OrthoPlus may be purchased to add certain cosmetic orthodontic benefits to your dental plan.



## Kaiser Permanente Smile Kids ML Dental Copay EPO plan

- Enables your children to have quality dental care for low out-of-pocket costs.
- Lets you easily budget by choosing an in-network only kid's dental plan with a fixed copay.
- Simplifies your children's dental care costs with copays that apply to your health plan's out-of-pocket maximum for children 18 and under.

### Find a dentist

**Kaiser Permanente Smile** gives you access to dental care in your area. Go to **kp.org** and click on "Doctors and Locations" to find dentists who are highly qualified and ready to meet your personalized care needs.

### Need to file a claim?

Submit a claim for a complaint, injury, or financial liability by calling the phone number located on your dental member ID card for assistance.

### Meet our Member Services team

Connect with us! If you have any questions or concerns, our LIBERTY Member Services team is available Monday through Friday, 8:00 a.m. to 8:00 p.m. (EST).

Toll-free phone: **888-798-9868**

TTY: 1-877-855-8039

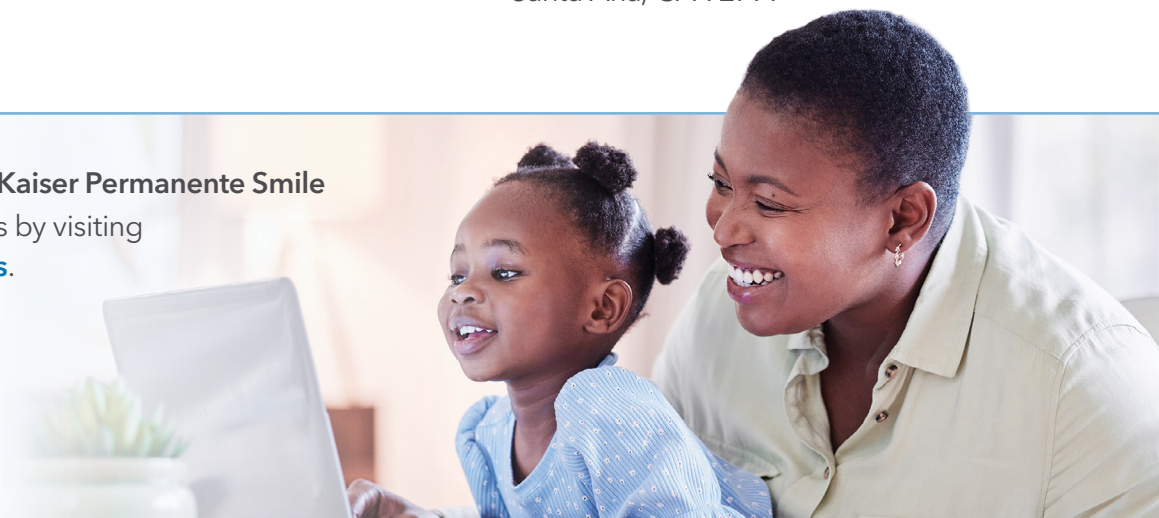
Mailing address:

LIBERTY Dental Plan

P.O. Box 26110

Santa Ana, CA 92799

Learn more about **Kaiser Permanente Smile** dental plan options by visiting [kp.org/dental/mas](https://kp.org/dental/mas).



This is only a summary of the dental plan benefits. Limitations and exclusions apply. The Dental Plan Rider, complete Dental Benefit Schedule and Health Plan Evidence of Coverage must be consulted to determine the exact terms, limitations and exclusions of coverage. Groups must meet the terms and conditions.