

Total health starts with a **smile**

Cultivate your whole-body wellness with oral care.

The **Kaiser Permanente Smile** ML Dental C-POS Premium plan offers dental benefits to support improved oral health for whole-body wellness. It covers a comprehensive range of preventive, diagnostic, and restorative services - with no waiting periods - and a robust selection of providers. Preventive care comes at little to no out-of-pocket cost. The C-POS plan offers the freedom to see any licensed dentist across the nation at a comparatively lower price point.

Benefit summary		
Network access	In-network	Out-of-network
Annual dental deductible (Per member / 3x per family)	\$0	\$50
Annual maximum benefit (Per member)	\$4,000	\$2,000
Deductible waived	Diagnostic and preventive services	
Available for purchase	Adult only and family	
Waiting periods	None	

Plan structure		
Service	Plan pays	
Diagnostic and preventive Covers oral exams, x-rays, cleanings and more	100% no deductible	90% no deductible
Basic restorative Covers fillings, root canals, tooth extractions and more	90% after deductible	80% after deductible
Major restorative Covers crowns, bridges, dentures, major extractions and more	60% after deductible	50% after deductible

OrthoPlus rider*		
Network access	In-network	Out-of-network
OrthoPlus options	Child only, adult only or family buy-up available	
OrthoPlus rider type	In-network coinsurance	
Orthodontic lifetime max (not applicable to copay plans)	\$2,500	

*OrthoPlus may be purchased to add certain cosmetic orthodontic benefits to your dental plan.



Kaiser Permanente Smile ML Dental C-POS Premium plan

- Offers you premium, high-quality dental care in and outside of our provider network.
- Receive dental care from any licensed dentist you choose, or take advantage of reduced fees for dental services provided by our in-network dentists.
- Easily plan your budget knowing the annual maximum and member payment percentages for your plan and services.
- Select any specialist in or outside of our network without needing a referral from your provider.

Find a dentist

Kaiser Permanente Smile gives you access to dental care in your area. Go to **kp.org** and click on “Doctors and Locations” to find dentists who are highly qualified and ready to meet your personalized care needs.

Need to file a claim?

Submit a claim for a complaint, injury, or financial liability by calling the phone number located on your dental member ID card for assistance.

Meet our Member Services team

Connect with us! If you have any questions or concerns, our LIBERTY Member Services team is available Monday through Friday, 8:00 a.m. to 8:00 p.m. (EST).

Toll-free phone: **888-798-9868**

TTY: 1-877-855-8039

Mailing address:

LIBERTY Dental Plan

P.O. Box 26110

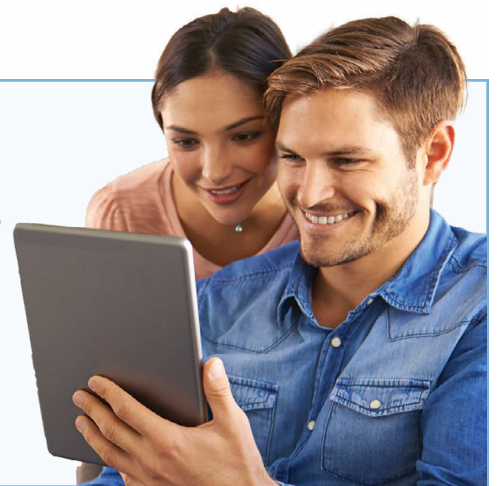
Santa Ana, CA 92799

New member? Let's get started!

Step 1: Log in to your **kp.org** account where you can to access a link to your **Kaiser Permanente Smile** dental member portal.

Step 2: Review details about your dental benefits through the dental portal.

Step 3: Get comprehensive dental care that is centered around you.



For more information visit kp.org/dental/mas.

This is only a summary of the dental plan benefits. Limitations and exclusions apply. The Dental Plan Rider, complete Dental Benefit Schedule and Health Plan Evidence of Coverage must be consulted to determine the exact terms, limitations and exclusions of coverage. Groups must meet the terms and conditions.